

MTSU LIBRARY



3 3082 00529 0340

MIDLANDER

35

OFFICE OF ALUMNI RELATIONS
MIDDLE TENNESSEE STATE UNIVERSITY
MURFREESBORO

~~Office of the President~~





The Midlander

VOLUME X

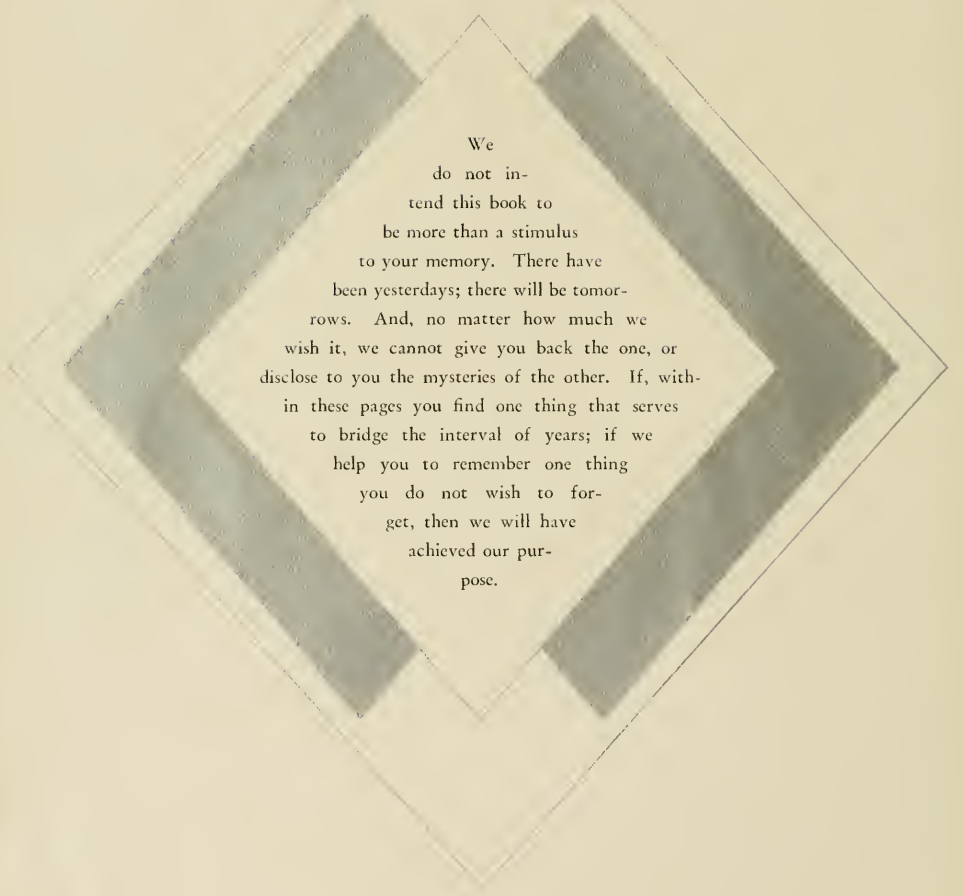
1935

*Published by the
Graduating
Class of*

STATE TEACHERS COLLEGE
MURFREESBORO, TENNESSEE

Library
Middle Tennessee State University
Murfreesboro, Tennessee

FOREWORD



We
do not in-
tend this book to
be more than a stimulus
to your memory. There have
been yesterdays; there will be tomor-
rows. And, no matter how much we
wish it, we cannot give you back the one, or
disclose to you the mysteries of the other. If, with-
in these pages you find one thing that serves
to bridge the interval of years; if we
help you to remember one thing
you do not wish to for-
get, then we will have
achieved our pur-
pose.



Contents




THE COLLEGE
THE CLASSES
ATHLETICS
ORGANIZATIONS
FEATURES

Dedication



*To that rare combination of scientist
and humorist, Dr. A. A. O'Kelly,
we, the Senior Class of 1935,
affectionately dedicate
this issue of the
Midlander.*



Digitized by the Internet Archive
in 2010 with funding from
Lyrisis Members and Sloan Foundation

THE
COLLEGE

<http://www.archive.org/details/midlander10midd>



Airplane View of the College



Administration Building



Library



Science Building



Rutledge Hall



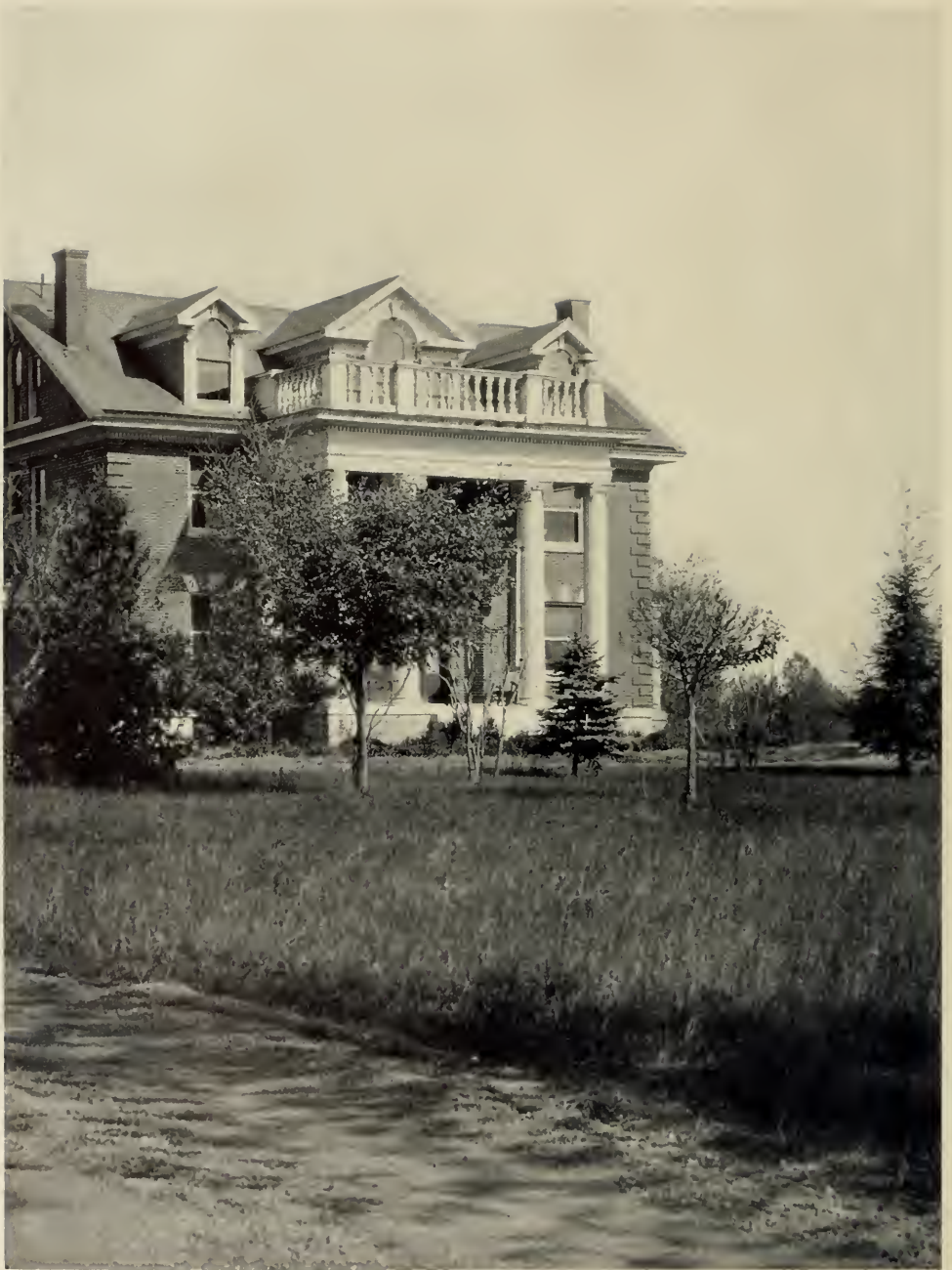
Lyon Hall



Jones Hall



Training School



President's Home



Cafeteria

The Multauler



PRITCHETT ALFRED LYON
President



NATHANIEL CRAIG BLASLEY
Dean-Registrar



FACULTY

FRANK E. BASS

History

B.S., State Teachers College, Murfreesboro, 1926;
M.A., George Peabody College, 1930.

N. C. BEASLEY

Education

B.S., George Peabody College, 1923; M.A., George Peabody College, 1927; Graduate Student, George Peabody College.

PHILIP MACON CHEEK

Foreign Languages

A.B., University of North Carolina, 1928; A.M., University of North Carolina, 1928; Ph.D., University of North Carolina, 1931.

GEORGE DAVIS

Biology

B.S., University of Chattanooga, 1914; M.A., George Peabody College, 1928.

MARION EDNEY

Biology

B.S., State Teachers College, Murfreesboro, 1933; M.A., University of Iowa, 1934.

MAY C. FRANK

Home Economics

B.S., Columbia University, 1925; M.S., Iowa State College, 1931; Graduate Work, Iowa State College, 1934.

NEAL D. FRAZIER

English

B.S., George Peabody College, 1917; M.A., George Peabody College, 1921; Graduate Student, George Peabody College.

OTIS L. FREEMAN

Manual Arts

B.S., State Teachers College, Murfreesboro, 1928; M.S., Iowa State College, 1933.

LOUISE FREY

English

A.B., Berea College, 1913; M.A., Teachers College, Columbia, 1927; Ph.D., George Peabody College, 1931.

MARY FRIZZELL

Primary Education

B.S., George Peabody College, 1926; M.A., George Peabody College, 1927.

THOMAS J. GOLIGHTLY

Education

A.B., Transylvania, 1904; B.D., Yale, 1906; Ph.D., George Peabody College, 1926.

B. B. GRACY

Physical Education

B.S.A., University of Florida, 1915; M.A., George Peabody College, 1928.

The Millander



FACULTY

OLLIE GRIEN

Geography

B.S., George Peabody College, 1925; M.A., George Peabody College, 1926.

KNOX T. HUTCHINSON

Agriculture

B.S., George Peabody College, 1921; M.A., George Peabody College, 1922; Graduate Student, George Peabody College.

HORACE JONES

Mathematics

B.S., State Teachers College, Murfreesboro, 1926; M.A., George Peabody College, 1927.

WILLIAM BENTON JUDD

History

B.S., State Teachers College, Murfreesboro, 1927; M.A., George Peabody College, 1927.

CHARLES D. LEWIS

Elementary Education

B.Ed., Kentucky State University, 1901; A.M., University of Illinois, 1917; Ph.D., George Peabody College, 1929.

AGNES LITTLE

Home Economics

B.S., University of Tennessee, 1918; M.A., George Peabody College, 1927.

PHILIP MANKIN

English

B.S., George Peabody College, 1925; M.A., George Peabody College, 1927.

WILLIAM M. MEBANE

Chemistry and Physics

B.S., University of North Carolina, 1925; M.A., University of North Carolina, 1926; Ph.D., University of North Carolina, 1929.

KATHERINE MONAHAN

History

A.B., Peabody Normal, 1892; M.A., University of Nashville, 1893.

A. A. O'KELLY

Chemistry

B.A., University of Arkansas, 1926; Ph.D., University of Colorado, 1929.

ANNE ORDWAY

English

Ph.B., University of Chicago, 1920; M.A., Vanderbilt University, 1927.

TOMMIE REYNOLDS

Physical Education

B.A., University of Nashville, 1911; M.A., George Peabody College, 1923.



FACULTY

HESTER ROGERS

Art

B.S., George Peabody College, 1923; M.A., University of Chicago, 1928.

E. MAY SAUNDERS

Music

B.S., State Teachers College, Murfreesboro, 1928; M.A., Columbia University, 1929.

ELIZABETH SHARDT

Foreign Languages

B.A., University of Tennessee, 1912; M.A., George Peabody College, 1929; Special Student, University of Ghent.

ISA LEE SHERROD

Library

B.S., State Teachers College, Johnson City, 1933; M.A., Peabody College, 1934.

C. C. SIMS

History

LL.B., Cumberland University, 1913; B.S., George Peabody College, 1917; M.A., George Peabody College, 1922; Ph.D., University of Chicago, 1930.

E. M. WALLER

Health and Athletics

B.A., Vanderbilt, 1927; M.A., George Peabody College, 1933.

CLARK WOODWARD

Manual Arts

B.S., State Teachers College, Murfreesboro, 1931.

J. C. WALLER

Director, Training School

B.A., University of Chicago, 1908; M.A., Columbia University, 1914; Ph.D., George Peabody College, 1928.

ANNE ASHLEY

Critic Teacher

B.S., State Teachers College, Murfreesboro, 1928; M.A., Peabody College, 1934.

KATE ASHLEY

Critic Teacher

B.S., State Teachers College, Murfreesboro, 1934.

MRS. JAMES CLAYTON

Critic Teacher

B.A., Vanderbilt University, 1928; M.A., Teachers College, Columbia University, 1932.

ANDRENA CROCKETT

Critic Teacher

B.S., State Teachers College, Murfreesboro, 1933.

The Millbender



FACULTY

MARY HALL
Critic Teacher

B.S., George Peabody College, 1927; M.A., George Peabody College, 1931.

MARGUERITE HARRISON
Critic Teacher

B.S., State Teachers College, Murfreesboro, 1926; M.A., George Peabody College, 1932.

MARGARET LOWE
Critic Teacher

B.S., State Teachers College, Murfreesboro, 1926; M.A., George Peabody College, 1929.

MRS. MARY MANLEY
Critic Teacher

B.S., State Teachers College, Murfreesboro, 1930; M.A., George Peabody College, 1932.

MRS. MADGE MANSON
Critic Teacher

A.B., Athens College, Athens, Alabama, 1909; B.A., Tennessee College, Murfreesboro, 1925; M.A., University of Michigan, Ann Arbor, 1932.

RUTH PATL
Critic Teacher

B.S., State Teachers College, Murfreesboro, 1929; M.A., Teachers College, Columbia, 1933; Graduate Student, Teachers College, Columbia.

W. R. ROMINE
Critic Teacher

B.S., George Peabody College, 1924; M.A., George Peabody College, 1930.

ROY J. SIMPSON
Critic Teacher

B.S., State Teachers College, Murfreesboro, 1930; M.A., University of Michigan, 1933.

FRANCES SNELL
Critic Teacher

B.S., State Teachers College, Murfreesboro, 1929; M.A., Teachers College, Columbia University, 1932.

MRS. SCOTT WILLIAMS
Critic Teacher

A.B., Union University; M.A., George Peabody College, 1932.



OFFICERS OF ADMINISTRATION

J. H. BAYER
Custodian of Property

J. S. HOLMES
Bursar

MARSHALL BURNS
Director of Vespers

MRS. BONNIE MCHENRY
Secretary to President

MRS. MARSHALL BURNS
Hostess, Rutledge Hall, College Nurse

MARGIE MITCHELL
Chief Hostess

C. W. DANIELS
Night Watchman

LORENE NEECE
Dictitian

MRS. O. L. FREEMAN
Hostess, Jones Hall

MARY WILSON PAYNE
Secretary to Dean

W. C. HASTINGS
Engineer

T. B. WOODMORE
Business Manager

STATE BOARD OF EDUCATION

●

HON. HILL McALISTER, <i>Governor of Tennessee</i>	Nashville
DR. W. D. COCKING, <i>Commissioner of Education</i>	Nashville
ROBERT L. PECK, SR.	Springfield
JOHN REYNOLDS	Murfreesboro
R. L. FORRESTER	Watertown
W. E. LAUDRUM	Trenton
J. D. HAMILTON	Church Hill
SAM J. McALISTER	Chattanooga
C. B. IJAMS	Jackson
ERNEST BALL	Memphis
MRS. RILEY STONE	Bristol



CLASSE



OFFICERS OF SENIOR CLASS

- | | | |
|--|--|---|
| <p>E. M. WALLER</p> <p>LOVELEEN WETZEL</p> | <p style="text-align: center;">CHATTANOOGA, TENNESSEE</p> <p>Science; Tau Omicron, Treasurer, '35; President, W. A. C., '35; Football Sponsor, '33; Band, '31, '32, '33, '34; Orchestra, '31, '32, '33, '34; Wohelo Club, '32, '33; Science Club, '32, '33, Secretary, '34; Rural Life Club, '31, '32, '33, '34; Physical Education Assistant, '34, '35; T. Club, '34; Student Council, '35; Class Treasurer, '31, Secretary, '33, President, '35.</p> | <p style="text-align: right;"><i>Sponsor</i></p> <p style="text-align: right;"><i>President</i></p> |
| <p>ELBERT WALKER</p> | <p style="text-align: center;">NASHVILLE, TENNESSEE</p> <p>Social Science; Editor, Freshet, '32; Band Major, '33; Vice-President, B. S. U., '34; Vice-President, Senior Class, '35; Debating Club, '32.</p> | <p style="text-align: right;"><i>Vice-President</i></p> |
| <p>MARY JONES</p> | <p style="text-align: center;">PROSPECT, TENNESSEE</p> <p>Social Science; English; Secretary, Senior Class, '35; Rural Life Club, '33, '34, Treasurer, '35; President, Woman's Student Council, '35; Y. W. C. A., '33, '34, '35; Tau Omicron, '35.</p> | <p style="text-align: right;"><i>Secretary</i></p> |
| <p>HERMAN CARROLL</p> | <p style="text-align: center;">ESTILL SPRINGS, TENNESSEE</p> <p>History; Vice-President, International Relations Club, '35; Rural Life Club, '32, '33, '34, '35; Treasurer, Senior Class, '35; Sigma Club, '35.</p> | <p style="text-align: right;"><i>Treasurer</i></p> |
| <p>JAMES NORTON</p> | <p style="text-align: center;">LAWRENCEBURG, TENNESSEE</p> <p>Manual Arts; Basketball, '33, '34, '35; Varsity Club, '34, '35; Rural Life Club, '33, '34, '35; Manager, Football Team, '33, '34; Tennis Team, '34; Baseball, '35.</p> | <p style="text-align: right;"><i>Sergeant-at-Arms</i></p> |

SENIOR CLASS



ADAMS, CARL
WOODBURY, TENNESSEE

Chemistry; Sigma Club, '34, Secretary, '35; Tennis Team, '34; Midlander Staff, '35.

ADAMS, MARY ELIZABETH
WOODBURY, TENNESSEE

English; Latin.

ADKISSON, DAVID FLINTOFF
ASHLAND CITY, TENNESSEE

History; Sigma Club; International Relations Club.

ALSUP, PEYTON
GLEADEVILLE, TENNESSEE

Mathematics; Rural Life Club, '33, '35, President, '34; Basketball, '34, '35; Varsity Club, '34, '35.

ANDERSON, MARTHA MIRIAM
MURKREESBORO, TENNESSEE

Physical Education; Health; Tau Omicron, '34, '35; Dramatic Club, '33, '34, '35; W. A. A., '35; Physical Education Medal, '35; Physical Education Club, '33, '34; Rural Life Club, '33, '34; International Relations Club, '33, '34.

BAGWELL, ANNE
DAYTONA BEACH, FLORIDA

English; Home Economics Club, '34; Physical Education Club, '32, '33.

BARKER, VIVA
DUNLAP, TENNESSEE

English; A. C. E., '34, '35; Rural Life Club, '32.

BARNETT, MARY WOODS
LEWISBURG, TENNESSEE

Biology; Rural Life, '31; Glee Club, '33; Y. W. C. A., '31, '35; Wohelo, '31.

BASHAM, MARGARET ADELINE
MURKREESBORO, TENNESSEE

Physical Education; Health; Rural Life Club, '32, '33, '34; Dramatic Club, '33, '34, '35; Physical Education Club, '33, '34; A. C. E., '35; Secretary-Treasurer, W. A. A., '35; Glee Club, '33, '34, Treasurer, '34, '35.

BEACHBOARD, JOSEPHINE
BELL BUCKETT, TENNESSEE

English; Tau Omicron; Y. W. C. A.; Library Club.

BENNETT, COLIFEN
DICHIRD, TENNESSEE

English; History; Y. W. C. A., '31, '35; Home Economics Club, '32, '33; Rural Life, '31, '34; W. A. A., '35; Tau Omicron, '34; Student Council, '34, '35; M. S. A., '33, '34.

BINKLEY, GEORGE
GOODLETTSVILLE, TENNESSEE

Science; Class Basketball; Rural Life Club.

SENIOR CLASS

BOYD, MARY ELEANOR
CHATTANOOGA, TENNESSEE

Music: Band, '32, '33, '34, '35; Orchestra, '32, '33, '34, '35; Glee Club, '32, '33, '34, '35; Library Club, '34; Music Club, '33; Y. W. C. A., '32, '33, '34, '35.

BRAMBLETT, EMMA E.
HILLSBORO, TENNESSEE

Biology; Basketball, '31; Tennis, '31; Y. W. C. A., '32, '33.

BRAY, W. PRESTON
NASHVILLE, TENNESSEE

History; Dramatic Club.

BRANDON, N. WILFORD
DOVER, TENNESSEE

English; History; Writers' Club, '33, '34, '35; Dramatic Club, '33, '34; Editor, S. T. C. News, '34, '35; Editor, Midlander, '35; Rural Life Club, '33, '34.

CAMPBELL, MARY BENSON
HERMITAGE, TENNESSEE

Home Economics; English; Home Economics Club, '34, '35; Vice-President, '34, President, '35; Y. W. C. A., '34, Secretary, '35; Tau Omicron, '34, President, '35; Rural Life Club, '33; Science Club, '33.

CARLTON, ERLINE
EAGLEVILLE, TENNESSEE

English.

CARLTON, WILLIAM BLAKE, JR.
MURFREESBORO, TENNESSEE

English; Social Science; Science Club, '32, '33; Dramatic Club, '34, '35; Football, '32; President, Student Body, '35; Midlander Staff, '35.

CARROLL, CLAUDE, JR.
TULLAHOMA, TENNESSEE

Science; Basketball, '33, '34, '35; Cheer Leader, '34; Rural Life Club, '32, '33, '35; Science Club, '32, '33, '34, '35; Glee Club, '33; Physical Education Club, '33, '34; Midlander Staff, '35; Y. M. C. A., '32, '33, '34.

CLARK, DOROTHY
MURFREESBORO, TENNESSEE

Home Economics; English; Science Club, '33, '34; Home Economics Club, '32, '33, '34, Secretary, '35.

CLARK, LETITIA

MURFREESBORO, TENNESSEE

English; Home Economics; Home Economics Club, '32, '33, '34, '35; Science Club, '32.

COLEMAN, FRANCES KING
SMYRNA, TENNESSEE

English; Rural Life Club, '32, '35; Y. W. C. A., '32, '35.

CORLEW, DAISY ROOK
CHARLOTTE, TENNESSEE

Latin.



SENIOR CLASS

CORLEW, MARY ELIZABETH
CHARLOTTE, TENNESSEE

Latin; Mathematics.

COUCH, MARIE
MURFREESBORO, TENNESSEE

English.

DANIEL, PORTER L.
WAVERLY, TENNESSEE

History; Industrial Arts.

DOUGLAS, BETTY JANE
HARTSVILLE, TENNESSEE

English; Orchestra; Glee Club.

DOUGLAS, MARGARET ELEANOR
HARTSVILLE, TENNESSEE

Chemistry; Orchestra, '33, '34, '35; Band, '33, '34, '35;
Tau Omicron, '35; Music Club, '32.

EZELL, KENNETH
MURFREESBORO, TENNESSEE

Science; Basketball, '34, '35; Baseball, '35; Varsity
Club; Manager Football, '34; Rural Lite Club, '33, '35;
David Lipscomb Club; Midlander Staff, '35.

FINNEY, ANDREW COLEMAN
MANCHESTER, TENNESSEE

History.

FLEMING, ARKLIE
CROSSVILLE, TENNESSEE

Social Science; History; Y. M. C. A., '33, '34, '35;
Glee Club, '33; International Relations Club, '34, '35.

FRANCIS, CLARENCE
MURFREESBORO, TENNESSEE

History; English; President, David Lipscomb Club, '35.

GAULT, THOMAS
FOUNTAIN CITY, TENNESSEE

Chemistry; Sigma Club, '35; Dramatic Club, '34, '35.

GENTRY, MARGARET ANNE
MURFREESBORO, TENNESSEE

French; English; Glee Club, '32, '34, Secretary, '35;
Band, '33, '35; Orchestra, '35; Pianist, B. S. U.,
'34, '35; Tau Omicron, '35.

GLASGOW, WILLIAM
ASHLAND CITY, TENNESSEE

Mathematics.



SENIOR CLASS

GOOD, DAISY

MURFREESBORO, TENNESSEE

History.

GOODMAN, HARRY

CORNERSVILLE, TENNESSEE

English; Biology; President, Y. M. C. A., '34; Sigma Club, Vice-President, '35; Vice-President, Rural Life Club, '35, Member, '31, '32, '33, '34.

GUSHERT, MARTHA A.

CHATTANOOGA, TENNESSEE

Home Economics; Home Economics Club, '34, '35; Y. W. C. A., '34, '35; Rural Life Club, '34, '35.

HAY, SAMUEL HUDSON

BIRMINGHAM, ALABAMA

English; History; Sigma Club, '33; President, Sigma Club, '34; Treasurer Junior Class, '34; Tennis Team, '34.

HAYNES, EULA IRENE

JASPER, TENNESSEE

Latin.

HAWKINS, HILDA HAZEL

MURFREESBORO, TENNESSEE

Social Science; English.

HICKS, JAMES

ENGLEWOOD, TENNESSEE

History; Basketball, '35; Rural Life Club, '34, '35; Varsity Club, '35.

HINES, JOHNNY

SHELBYVILLE, TENNESSEE

Chemistry; Social Science; Glee Club, '34, President, '35; Science Club, '34, '35; Rural Life Club, '34; Dramatic Club, '34, '35; Midlander Staff, '35; Y. M. C. A., '34, '35.

HOOVER, ELIZABETH

SMYRNA, TENNESSEE

Social Science; A. C. E., '34, '35; Rural Life Club, '33, '34; Glee Club, '35.

HOOVER, RUBY

MORRISON, TENNESSEE

English; A. C. E., '34, '35.

HUGHES, JOHN NEIL

MT. PLEASANT, TENNESSEE

History; Science Club; Cheer Leader, '33.

HUNTER, MARY CLIFTON

ANTIOCH, TENNESSEE

History; English; Y. W. C. A., '32, '33, '34, '35; Home Economics Club, '34, '35; Rural Life Club, '32, '33, '34, '35; Student Council, '34.



SENIOR CLASS



JAKES, MRS. VASHTI MANIER
EAGLEVILLE, TENNESSEE
Home Economics; Home Economics Club, '32, '33, '34,
'35; A. C. E., '34, '35; B. S. U., '35; Y. W. C. A., '35.



JOHNSON, HASTON
DUNLAP, TENNESSEE
English.



KOEN, SANKEY
NASHVILLE, TENNESSEE
Science; Glee Club.



LAWS, MRS. LAURA GRAHAM
LYNCHBURG, TENNESSEE
Home Economics; Home Economics Club.



LEDBETTER, TULA LEE
WILLOW GROVE, TENNESSEE
Mathematics; English.



LOKEY, JAMES
MURFREESBORO, TENNESSEE
Chemistry; Mathematics; Science Club, '32, '33; President,
Science Club, '34, '35; Band, '34, '35, President,
'32, Vice-President, '33; Orchestra, '32, '33, '34, '35,
Secretary, '34; Rural Life Club, '32, '33, '34, '35.



LOVELL, LAURA CRAIG
MADISON, TENNESSEE
Home Economics; Home Economics Club, '34; Reporter,
'34, '35; Rural Life Club, '34, '35; A. C. E., '34,
'35; Science Club, '34, '35; Reporter, Y. W. C. A.,
'34, '35.



LYLE, ALICE WASHINGTON
CUMBERLAND CITY, TENNESSEE
English; Tau Omicron; Y. W. C. A.; Member, Student
Council; Glee Club; Rural Life Club.



MANKIN, JANE ELLEN
MURFREESBORO, TENNESSEE
Latin; English; Dramatic Club, '32, '33, '35, Vice-Presi-
dent, '34; Program Chairman, '35; Writers' Club, '32,
Secretary, '33, '34, President, '35; Associate Editor,
Midlander, '35.



McFADDEN, ANNA
MURFREESBORO, TENNESSEE
English.



MERRIMAN, MARY LEE
ETHRIDGE, TENNESSEE
English; History.

SENIOR CLASS

MIDDLETON, ALBERT E.

NEW BRITAIN, CONNECTICUT

Science; Sigma Club, '35; Assistant Football Coach, '34.

MITCHELL, MAUDE

WOODBURY, TENNESSEE

Home Economics; English; Home Economics Club, '35.

MOFFITT, GENTRY

McMINNVILLE, TENNESSEE

Biology.

MOORE, RHODA LEE

CHATTANOOGA, TENNESSEE

Music; Band, '32, '33, '34, President, '35; Orchestra, '32, '33, Secretary and Treasurer, '34, '35; Rural Life Club, '32, '33, '34, '35; Library Club, '34; Music Club, '32; Y. W. C. A., '32, '33.

OVERBEY, WILLIAM

FRANKLIN, TENNESSEE

Mathematics; Football, '34.

OWEN, HOYTE

READYVILLE, TENNESSEE

Social Science; Football, '31, '32, '33, '34; Baseball, '35; Varsity Club.

PARKER, S. AUBREY

MANCHESTER, TENNESSEE

History; Acrobatic Team, '31, '32; Physical Education Club, '31, '32, '33, '34.

PARSONS, HUGH

COLUMBIA, TENNESSEE

Social Science.

POTTS, GLADYS

SMYRNA, TENNESSEE

French.

REEVES, SARA DAVID

MURFREESBORO, TENNESSEE

Physical Education; English; Physical Education Club, '31, '32, '33; Rural Life Club, '32, '33, '34, '35; Science Club, '32, '33.

REED, ALLIENE

MURFREESBORO, TENNESSEE

Home Economics; Home Economics Club.



SENIOR CLASS



REEVES, MRS. W. E.
MURFREESBORO, TENNESSEE

History.



RICHARDS, MRS. CLYDE E.
WOODBURY, TENNESSEE

English.



ROBERTS, PAULINE
CHATTANOOGA, TENNESSEE
Biology; Chemistry; Science Club, '32, '33, '34; Rural Life Club, '33, '34; A. C. E., '34, '35; Vice-President, Glee Club, '34, '35.



ROE, AUDREY
SPRINGFIELD, TENNESSEE
Science; W. A. A., '35; Y. W. C. A., '33, '34, '35; Rural Life Club, '33, '34, Vice-President, '35; Science Club, '33, '34, '35; Physical Education Club, '33, '34; Football Sponsor, '35.



SANDS, GRAY DUDLEY
OLD HICKORY, TENNESSEE
Science; Football, '31, '32, '33, '34; Basketball, '31, '32, '33; Vice-President, Junior Class, '34; Rural Life Club; Varsity Club, '32, '33, '34; Secretary-Treasurer, Varsity Club, '34.



SANDERS, MARGUERITE DOUGLASS
RUSSELLVILLE, ALABAMA
English; History.



SAWYER, MARIETTA
MURFREESBORO, TENNESSEE
Home Economics; English; Treasurer, Home Economics Club, '35; Rural Life Club, '32, '33.



SCOTT, LUCILLE
ROCKVALE, TENNESSEE
Biology; Physical Education; W. A. A., '35; Physical Education Club, '34.



SHARPE, GEORGE
MT. PLEASANT, TENNESSEE
Social Science; English; Football, '31, '32, '33, '34; Basketball, '31, '32; Rural Life Club, '31, '32, '33, '34; Dramatic Club, '32, '33; Varsity Club, '32, '33, '34.



SHARP, WILSON
FLAT WOODS, TENNESSEE
History; Rural Life Club, '32; Basketball, '32, '33.

SENIOR CLASS

SHELTON, LON
BEECH GROVE, TENNESSEE

History; Sigma Club, '35.

SMITH, BESSIE BYRNE
MURFREESBORO, TENNESSEE

English.

SMITH, ELIZABETH
CHATTANOOGA, TENNESSEE

English.

SNEED, DELLA LOUISE
NORMANDY, TENNESSEE

English; Dramatic Club; Glee Club.

SNELL, AZILEE O.
MURFREESBORO, TENNESSEE

Social Science; A. C. E., '34, '35; Rural Life Club, '34; Y. W. C. A., '34.

SORY, MARY ELIZABETH
CEDAR HILL, TENNESSEE

English; Rural Life Club, '34, '35; Y. W. C. A., '34, '35; Tennis Team, '34, '35; W. A. A., '35.

SPRINGER, SETH
WEST POINT, TENNESSEE

Industrial Arts; Baseball, '27, '28; Rural Life Club, '30, '31; Y. M. C. A., '30, '31.

STEGALL, MAY LOVE
ROCKVALE, TENNESSEE

Home Economics; Home Economics Club, '32, '33, '34, Vice-President, '35; Physical Education Club, '32, '33, '34; W. A. A., '35.

STROOP, CHRISTINE
MURFREESBORO, TENNESSEE

English; French; Writers' Club, '32, '33, '34, '35; Dramatic Club, '34, '35; A. C. E., '34.

SUMMAR, W. C.
SMITHVILLE, TENNESSEE

Social Science; Glee Club, '34; Vice-President, Y. M. C. A., '33, '34; President, B. S. U., '34, '35; International Relations Club, '34; Secretary-Treasurer, Debating Club, '34, '35.



SENIOR CLASS



TAYLOR, JAMES
FOSTERVILLE, TENNESSEE
History; Chemistry; Sigma Club.



THOMAS, ERVIN H.
CORNERSVILLE, TENNESSEE
Science.



THOMAS, MARIE
HARTSVILLE, TENNESSEE
Home Economics: Home Economics Club, '31, '32, '33, '35; Rural Life Club, '31, '32, Secretary, '33; Science Club, '32, '33; Y. W. C. A., '33.



TRAPP, ETTA
SMITHVILLE, TENNESSEE
History; English; Y. W. C. A., '34, '35; Debating Club, '34, '35, Secretary, '34, Vice President, '35; International Relations Club, '34, '35, Reporter, '34, Secretary-Treasurer, '35; Readers' Club, '35; Writers' Club, '34, '35.



WALKER, MARY LOUISE
NASHVILLE, TENNESSEE
Mathematics; Social Science; B. S. U., '34; State B. S. U., Secretary, '34, '35; Assistant Editor, Freshet, '32.



WALKER, NELLE
JINGO, TENNESSEE
Biology; Home Economics Club, '33, '34, '35.



WALLACE, JOE
OLD HICKORY, TENNESSEE
Science; Football, '31, '32, '33; Varsity Club, '33, '34, '35; Rural Life Club, '32, '33, '34; President, Sophomore Class, '33.



WILLIS, WYLIE
WEST POINT, TENNESSEE
Science; Science Club, '34.



WINN, ANNA LOUISA
CLARKSVILLE, TENNESSEE
Mathematics; Social Science; Dramatic Club, '34, '35, Orchestra, '35, Band, '35; International Relations Club, '35; Rural Life Club, '34, '35.



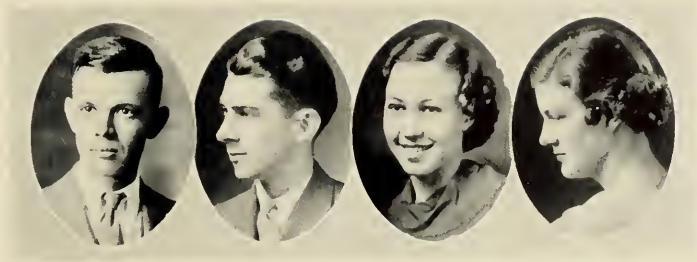
WOOD, MARY CLARA
WOODBURY, TENNESSEE
English.



COUSER, MEVOLENE
TULLAHOMA, TENNESSEE
Social Science; Rural Life Club, '31, '32, '33, Vice-President, '34.



GOFORTH, A. T. D.
TRACY CITY, TENNESSEE
Biology; Chemistry; Science Club, '32.



OFFICERS OF JUNIOR CLASS

- | | | |
|---------------------|-------------------------|----------------------------|
| HORACE JONES | | <i>Sponsor</i> |
| JOHN HOLLOWAY | | <i>President</i> |
| | MURFREESBORO, TENNESSEE | |
| VERNA MAI ELLIS | | <i>Vice-President</i> |
| | NASHVILLE, TENNESSEE | |
| SARA GEORGE VENABLE | | <i>Secretary-Treasurer</i> |
| | ATLANTA, GEORGIA | |

JUNIOR CLASS



ABERNATHY, JACK Murfreesboro, Tenn.
 ABERNATHY, SPEER Murfreesboro, Tenn.
 ALLEN, EDMUND B., JR. Murfreesboro, Tenn.

ANDERSON, MAURICE Murfreesboro, Tenn.
 BEASLEY, HARTWELL Triune, Tenn.
 BELL, MARTHA Springfield, Tenn.

BETTY, LESTER Tennessee City, Tenn.
 BROADWAY, ANDREW Lobelville, Tenn.
 CAMPBELL, CARL McMinnville, Tenn.

CLAYTON, RALPH B. Memphis, Tenn.
 COLEMAN, WOODROW Nashville, Tenn.
 COLLINS, WILLIAM Pulaski, Tenn.

COOK, MAYME Murfreesboro, Tenn.
 COOPER, MARTHA Cowan, Tenn.
 DAVIS, BULEAH Cornersville, Tenn.

DANIEL, IRA Murfreesboro, Tenn.
 ELLIOTT, VERA MAE Manchester, Tenn.
 EDWARDS, JULIA Bell Buckle, Tenn.

JUNIOR CLASS

EDWARDS, JOHNNIE Lewisburg, Tenn.
 FIELD, MARY Centerville, Tenn.
 FULLER, SARA BOONE Sale Creek, Tenn.

FAITH, ETHELYN Madison, Tenn.
 GOWER, LOUISE Springfield, Tenn.
 HASKINS, REBECCA Springfield, Tenn.

HITT, ROBERT M. Murfreesboro, Tenn.
 HOLCOMB, JUNE McMinnville, Tenn.
 HOOVER, JOHN Smyrna, Tenn.

JACKSON, J. W. Murfreesboro, Tenn.
 JACKSON, LESTER Old Hickory, Tenn.
 JOHNS, D. B. Murfreesboro, Tenn.

JOHNSON, FRANCES Watertown, Tenn.
 KESSLER, HENRY G. Loretto, Tenn.
 LOWE, PEARL Rockvale, Tenn.

LOWRY, OUIDA .Pembroke, N. C.
 MAJOR, MILDRED Chattanooga, Tenn.
 MANOR, CLARA . Waverly, Tenn.



JUNIOR CLASS



MASON, ROBERT Woodbury, Tenn.
 MEADOWS, EVELYN Manchester, Tenn.
 MOORE, AVIS Murfreesboro, Tenn.

MOORE, NELLIE Belvidere, Tenn.
 MORAN, MARY JOE Franklin, Tenn.
 MURPHY, ROBERT, JR. Murfreesboro, Tenn.

MCCLEAREN, ELIZABETH Centerville, Tenn.
 MCDANILLS, RUTH Chattanooga, Tenn.
 NICHOLS, EDWARD C. Mt. Pleasant, Tenn.

PATE, LEE Murfreesboro, Tenn.
 PITTARD, HOMER Murfreesboro, Tenn.
 PITTS, RAYMOND Murfreesboro, Tenn.

POTTS, MARTHA E. Smyrna, Tenn.
 POWERS, LOUISE Denver, Tenn.
 RIDING, MORSE L. Joelton, Tenn.

RING, SALLIE MAY Belfast, Tenn.
 ROBINSON, CLAUDE Christiana, Tenn.
 ROSSON, LULA Nashville, Tenn.

JUNIOR CLASS

SARVER, CHARLES Hendersonville, Tenn.
 SCOTT, WILLIAM OWEN Rockvale, Tenn.
 SIMMONS, EVANS Hillsboro, Tenn.

SHASTEEN, MINNIE O. Fayetteville, Tenn.
 SIMS, JANICE Christiana, Tenn.
 STARBUCK, VIRGINIA Linden, Tenn.

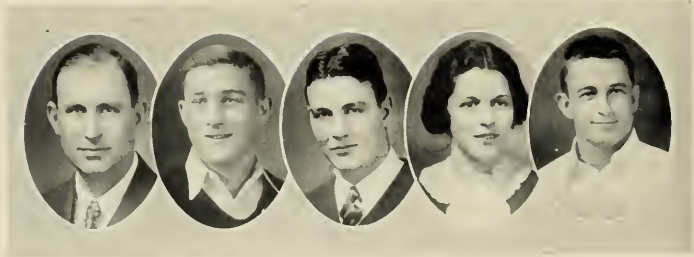
WADE, IDABELLE Murfreesboro, Tenn.
 WALKER, MARY ELIZABETH Chattanooga, Tenn.
 WARREN, EDWARD Franklin, Tenn.

WHEELER, CHARLES Murfreesboro, Tenn.
 WHEELER, EVELYN Mt. Pleasant, Tenn.
 WILLIAMS, ANNIE ELIZABETH Guymon, Okla.

WILSON, ROBERT Murfreesboro, Tenn.
 WISER, JESSE Wartrace, Tenn.
 WOODYARD, MRS. AMY B. Greenfield, Tenn.

WOODWARD, SARA Lewisburg, Tenn.
 WRIGHT, MARGARET Murfreesboro, Tenn.





OFFICERS OF SOPHOMORE CLASS

DR. A. A. O'KELLY		<i>Sponsor</i>
GRANVILLE WAGGONER	NASHVILLE, TENNESSEE	<i>President</i>
ROBERT BASS	NASHVILLE, TENNESSEE	<i>Vice-President</i>
FRANCES NICHOLSON	ASHLAND CITY, TENNESSEE	<i>Secretary</i>
EDWARD HESFY	NASHVILLE, TENNESSEE	<i>Treasurer</i>

SOPHOMORE CLASS

ALEXANDER, RUTHThompsons Station, Tenn.
 BARNES, BILLIEBakewell, Tenn.
 BAXTER, PAULINELawrenceburg, Tenn.

BEARD, MARY ALICE..... Clifton, Tenn.
 BENNETT, W. L. Eagleville, Tenn.
 BLANKENSHIP, CHARLES..... Murfreesboro, Tenn.

BOSTELMAN, MARTHA Joelton, Tenn.
 BRATCHER, LETRESS Daylight, Tenn.
 BUCHANAN, RUFUS Murfreesboro, Tenn.

BROWN, ELIZABETH Pikeville, Tenn.
 BROWN, WILSON Murfreesboro, Tenn.
 BURKS, HILDA Chattanooga, Tenn.

CARVER, DAVID Nashville, Tenn.
 CARNAHAN, ELDON Murfreesboro, Tenn.
 CLARK, RACHEL..... Murfreesboro, Tenn.

CLINARD, BESS ALICE Springfield, Tenn.
 COLEMAN, EARL..... Smyrna, Tenn.
 COPPINGER, KATHERINE..... Sale Creek, Tenn.

CAPPS, MARTHA WILSON Waverly, Tenn.
 COTHRAN, LUCILLE..... Hartsville, Tenn.
 DICKSON, OPAL Donelson, Tenn.

DOWLEN, EWELL Nashville, Tenn.



SOPHOMORE CLASS



DOWNEY, VIRGINIA Huntland, Tenn.
 EARTHMAN, MARTHA Murfreesboro, Tenn.
 EZELL, FREDERICK Murfreesboro, Tenn.

FLURY, SAMMIE Tracy City, Tenn.
 FORRESTER, CHARLES Jasper, Tenn.
 GLLIAM, LELL Pelham, Tenn.

GOFORTH, A. T. D. Tracy City, Tenn.
 GONCE, CLEO Beech Grove, Tenn.
 GRACY, MARTHA MOORE Murfreesboro, Tenn.

GRAHAM, ELIZABETH College Grove, Tenn.
 GREEN, MYRA Shelbyville, Tenn.
 HARPER, ROBERT Nashville, Tenn.

HINES, RUTH Shelbyville, Tenn.
 HURT, MILDRED Chapel Hill, Tenn.
 INGRAM, FREIDA Culleoka, Tenn.

JACKSON, ANDREW TODD Murfreesboro, Tenn.
 JAMES, EDNA Murfreesboro, Tenn.
 JENNINGS, ERLINE Milton, Tenn.

JONES, RACHEL Chapel Hill, Tenn.
 KEITH, NELLE Huntland, Tenn.
 KEMP, CAMILLA Lafayette, Tenn.

KENNEDY, THELMA South Pittsburg, Tenn.
 KIDD, MABEL Fayetteville, Tenn.

SOPHOMORE CLASS

LOVE, FOUNT Rockvale, Tenn.
 MAJOR, WILL EARL Lebanon, Tenn.
 MALONE, PAULINE Dowelltown, Tenn.

MARTIN, LILLIAN Sale Creek, Tenn.
 McCASLIN, FLORENCE Nashville, Tenn.
 McGFHEE, CLOFTON Fayetteville, Tenn.

MERRIMAN, ELIZABETH Waynesboro, Tenn.
 MIMS, BROWN Ardmore, Tenn.
 MIMS, ELIZABETH Ardmore, Tenn.

MOFFITT, LOUISE McMinnville, Tenn.
 MULLINS, GENE Murfreesboro, Tenn.
 NEWMAN, HARRY E. Englewood, Tenn.

NEWMAN, SHAD Englewood, Tenn.
 OAKLEY, FRANCES Overall, Tenn.
 O'BRIEN, DONALD Murfreesboro, Tenn.

PARKER, ALLIE E. Flatcreek, Tenn.
 PARKS, RUBY Spring Hill, Tenn.
 REEDY, ELNA Minor Hill, Tenn.

RILEY, ODA Joelton, Tenn.
 ROBERTSON, JAMES Taft, Tenn.
 ROGERS, FRANCES Murfreesboro, Tenn.

SHIPP, MOZELLE Lebanon, Tenn.
 SHOFFNER, FRANCES Shelbyville, Tenn.



SOPHOMORE CLASS



SIMPKINS, MARTHA Springfield, Tenn.
 SIMS, JOHN Wartrace, Tenn.
 SMITH, CHARLES McMinnville, Tenn.

SMITH, HAZEL Watertown, Tenn.
 SMITH, WATT Murfreesboro, Tenn.
 STEGALL, WHITNEY Rockvale, Tenn.

STONE, MILDRED Lafayette, Tenn.
 SUMMAR, WILSON Smithville, Tenn.
 SWIFT, WILLIAM Algood, Tenn.

TAFT, THERESA Spencer, Tenn.
 TALLANT, DOROTHY Chattanooga, Tenn.
 THOMAS, ERNEST Hartsville, Tenn.

TUCKER, J. T. Morrison, Tenn.
 VANCE, HELEN Hartsville, Tenn.
 WARREN, ALGA LUCILLE Linden, Tenn.

WATKINS, MARJORIE Nashville, Tenn.
 WEBB, CECIL Nashville, Tenn.
 WEBB, RUTH Smithville, Tenn.

WHEELER, FRANCES Antioch, Tenn.
 WHITLEY, ROSA Morristown, Tenn.
 WILLIAMS, THELMA Hixson, Tenn.

WINNETT, MILDRED Morrison, Tenn.
 WINSTEAD, DeALVA INEZ Walling, Tenn.



OFFICERS OF FRESHMAN CLASS

N. C. BEASLEY

Sponsor

CHARLES MURPHY

NASHVILLE, TENNESSEE

President

VIRGINIA WILKINSON

CORNEYSVILLE, TENNESSEE

Secretary

JOE NETHERLAND

MURFREESBORO, TENNESSEE

Treasurer

FRESHMAN CLASS



- | | |
|---------------------|-------------------------|
| ADAMS, JOHN H. | Columbia, Tenn. |
| ADCOCK, ELROY | Wartrace, Tenn. |
| ALLEN, SARA BELLE | Murfreesboro, Tenn. |
| ASHLEY, JOE, JR. | Beech Grove, Tenn. |
| AVERITT, LILA | Erin, Tenn. |
| BAKER, BETTY | Birchwood, Tenn. |
| BARKER, LOIS | Jasper, Tenn. |
| BARRETT, MALCOM | Walter Hill, Tenn. |
| BASKIN, ROBERT | Murfreesboro, Tenn. |
| BASS, ALWILDA | Columbia, Tenn. |
| BAXTER, PAULINE | Lawrenceburg, Tenn. |
| BEASLEY, THELMA | Franklin, Tenn. |
| BOYLES, DAISY | White House, Tenn. |
| BRAMBLETT, ROBERT | Hillsboro, Tenn. |
| BROWN, FRANCES | Graham, Tenn. |
| BROWN, GLADYS | Palmer, Tenn. |
| BROWNING, ELIZABETH | Milan, Tenn. |
| BRYANT, BARRY | Memphis, Tenn. |
| CAMPBELL, CLARENCE | Rockvale, Tenn. |
| CARLTON, JOHN | Eagleville, Tenn. |
| CLINARD, KATHERINE | Springfield, Tenn. |
| COBLE, JENNIE MAYE | Decherd, Tenn. |
| CUMMINGS, HAROLD | Nashville, Tenn. |
| De FRIESE, MARIE | Birchwood, Tenn. |
| DERRYBERRY, ROY | Lewisburg, Tenn. |
| DODSON, MINNIE | Sparta, Tenn. |
| DRYE, LUCILLE | Nashville, Tenn. |
| DUNCAN, BOYD | Hillsboro, Tenn. |
| DUNN, ALLEN | Kingston Springs, Tenn. |
| EALY, REIDERS | Hazel Green, Ala. |

FRESHMAN CLASS

EARTHMAN, ELLEN Murfreesboro, Tenn.
 ELDER, KATHLEEN Manchester, Tenn.
 ELLEDGE, TENNYE FRANCES Woodbury, Tenn.
 ELMORE, LEFFEL Bethpage, Tenn.

ERWIN, GLADYS White House, Tenn.
 FERRELL, DAVID Murfreesboro, Tenn.
 FINNEY, F. B. Winchester, Tenn.
 FLURY, MARIE Tracy City, Tenn.

FORBES, FRANCES Ardmore, Tenn.
 FORGY, TREVA Cowan, Tenn.
 FREEMAN, MARTHA Gallatin, Tenn.
 FULLER, SARA LU Cumberland City, Tenn.

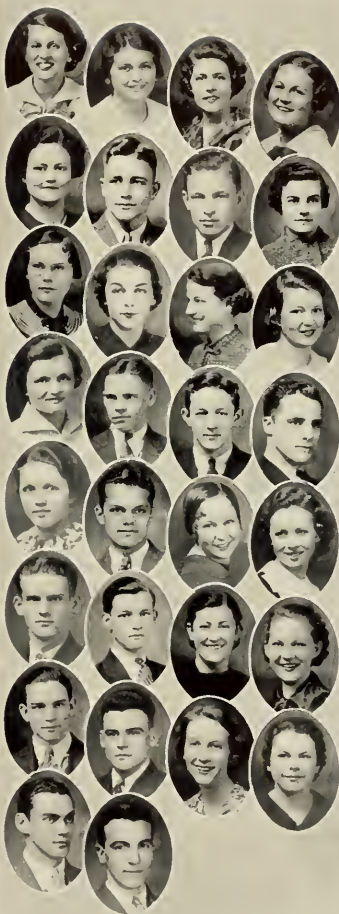
GALLIAN, CORNELIA Appleton, Tenn.
 FYKES, CARLINE Westmoreland, Tenn.
 GARANT, RICHARD Murfreesboro, Tenn.
 GARNER, JAMES Pulaski, Tenn.

GARNER, THELMA Decherd, Tenn.
 GIPSON, LANNY Decherd, Tenn.
 GOODALL, DOROTHY Lebanon, Tenn.
 GRAY, MARTHA Lewisburg, Tenn.

GREEN, JAMES Murfreesboro, Tenn.
 GREEN, THOMAS Shelbyville, Tenn.
 GWIN, MARY ALICE Hartsville, Tenn.
 HALL, DOROTHY Hartsville, Tenn.

HAMBLÉN, JAMES Nashville, Tenn.
 HAMBRICK, JOHN Lewisburg, Tenn.
 HAMPTON, SARA Fayetteville, Tenn.
 HARDISON, ANGELYNE Columbia, Tenn.

HAUBENREICH, ALBERT Decherd, Tenn.
 HENLEY, SAM Decherd, Tenn.



FRESHMAN CLASS



HEWGLEY, THOMAS	Nashville, Tenn.
HINDMAN, HAZEL	Tracy City, Tenn.
HODGE, RUTH	Arrington, Tenn.
HOLMES, WILMA	McMinnville, Tenn.
HOLLOWAY, ERLINE	Walter Hill, Tenn.
HOOKER, EDGAR REED	Smithville, Tenn.
HOOVER, WELTON	Bell Buckle, Tenn.
HOOVER, WILLIAM	Snyrna, Tenn.
JOHNS, HASCAL	Walter Hill, Tenn.
KEMMER, OLA	Grassy Cove, Tenn.
KENNON, EMMETT	Nashville, Tenn.
KING, MRS. ELSIE	Linden, Tenn.
KIRBY, MARY AGNES	Hartsville, Tenn.
KOONS, AVINE	Chattanooga, Tenn.
LANDERS, HAYDEN	Chattanooga, Tenn.
LANE, ROBERT	Nashville, Tenn.
LAWSON, INA BLANCHE	Pikeville, Tenn.
LAWSON, VIRGINIA	Liberty, Tenn.
LITTLE, CORNELIA	Pikeville, Tenn.
McBRIDE, ANNIE RUTH	Manchester, Tenn.
McGAVOCK, MARY MANN	Columbia, Tenn.
McGEHEE, LUCILE	Elora, Tenn.
McINTYRE, IVERETT	Nashville, Tenn.
McMAHON, RACHEL	Nolensville, Tenn.
McRAE, JEAN	Nashville, Tenn.
McRAE, LUCILLE	Nashville, Tenn.
MAJOR, KATHRINE	Lebanon, Tenn.
MALONE, MILDRED	Murfreesboro, Tenn.
MALONE, WILL T.	Watertown, Tenn.
MAHONEY, MARGARET	Murfreesboro, Tenn.
MASON, ABE	Woodbury, Tenn.

FRESHMAN CLASS

- | | |
|--------------------|-----------------------|
| MILLER, ALLEN | Rockvale, Tenn. |
| MATTHEWS, JANIE | Lynnville, Tenn. |
| MESSICK, MOZELLE | Christiana, Tenn. |
| MORRIS, SARA EMMA | Springfield, Tenn. |
| MORTON, ELOISE | Nashville, Tenn. |
| NEIL, BETTY | Nashville, Tenn. |
| NEWMAN, NELLIE | Englewood, Tenn. |
| NEWMAN, MRS. HARRY | Etowah, Tenn. |
| NORVILLE, WARDINE | Manchester, Tenn. |
| NOWLIN, ELIZA ANN | Wartrace, Tenn. |
| OGLES, MARY | Christiana, Tenn. |
| OLDHAM, GORDON | Pleasant Shade, Tenn. |
| OVERALL, BLAKEMORE | Liberty, Tenn. |
| PARKER, VELIE | Bradyville, Tenn. |
| PATTON, MINNIE K. | College Grove, Tenn. |
| PITCOCK, ZELMA | Fayetteville, Tenn. |
| PUCKETT, NAT | Eagleville, Tenn. |
| QUARLES, FRANCES | Cowan, Tenn. |
| RANSOM, MARY | Nashville, Tenn. |
| REYNOLDS, MELVILLE | Duncan, Okla. |
| RIGNEY, OZELLE | Summitville, Tenn. |
| RIGNEY, PAULETTE | Summitville, Tenn. |
| ROARK, ROBERT D. | Westmoreland, Tenn. |
| ROGERS, OCTAVIA | Murfreesboro, Tenn. |
| RUMMANS, WILL D. | Madison, Tenn. |
| RUSS, JOHN G. | Clifton, Tenn. |
| SADLER, MERNA | Christiana, Tenn. |
| SCHARDT, CHARLES | St. Louis, Mo. |
| SEAY, ROBERT | Nashville, Tenn. |
| SEWART, HAROLD | Murfreesboro, Tenn. |
| SHAPARD, JEAN | Shelbyville, Tenn. |



FRESHMAN CLASS



- | | |
|-----------------------|--------------------------|
| SHARP, MARGARET | Nashville, Tenn. |
| SHELTON, BERTHA | Beech Grove, Tenn. |
| STONE, WILMA | Lafayette, Tenn. |
| SMITH, CARTER | Ardmore, Tenn. |
| SMITH, JAMES T. | McMinnville, Tenn. |
| SMITH, MARY | Helena, Tenn. |
| SMOTHERMAN, HERMINE | Murfreesboro, Tenn. |
| SMITHERMAN, WOODY | Bessemer, Ala. |
| SMOTHERMAN, GAYNELL | Murfreesboro, Tenn. |
| STAMMER, JAMES | Chapel Hill, Tenn. |
| SPENCER, IDA | Lynchburg, Tenn. |
| STEWART, PANGLE | Fayetteville, Tenn. |
| STOREY, BEATRICE | Frankewing, Tenn. |
| STRICKLIN, LERA | Lawrenceburg, Tenn. |
| STONE, MARY KATHERINE | Viola, Tenn. |
| SULLIVAN, ELIZABETH | Eagleville, Tenn. |
| SWEENEY, FRANCES | Nashville, Tenn. |
| THOMPSON, CLEMENTIA | Gallatin, Tenn. |
| TRAPP, FRANCES | Ethridge, Tenn. |
| TUCKER, TOM, JR. | Lafayette, Tenn. |
| TURMAN, LILLIAN | Waynesboro, Tenn. |
| TURNER, HARRY | Milton, Tenn. |
| UMBAUGH, MARY FRANCES | Winchester, Tenn. |
| WAITS, MAURICE | Minor Hill, Tenn. |
| WEST, MADGE | Brewstertown, Tenn. |
| WILKINSON, REBECCA | Cornersville, Tenn. |
| WILLIAMS, ALMA | Thompsons Station, Tenn. |
| WISER, CLIFTON | Wartrace, Tenn. |
| WISER, ELDRED | Wartrace, Tenn. |
| WRIGHT, MITCHELL | Cornersville, Tenn. |
| YOUNG, BILL | Orme, Tenn. |
| TURRINTINE, NINA | Shelbyville, Tenn. |



ATHLETICS



NOOBY FREEMAN

E. M. WALLER

AL MIDDLETON

COACHES

● Coach Waller finished his second year at S. T. C. this season. Beseet with the difficulties of introducing a new system, and the scarcity of material, he has worked quietly and efficiently towards the development of a winning combine. That, perhaps, is the keynote to his coaching tactics, the quietness and smoothness with which he accepts both defeat and victory. His is a creed of sportsmanship, and football for the fun of the game. His philosophy is right. His knowledge of fundamentals is far-reaching. With those things, and with the class of material now present, the team should do great things in the seasons to come.

● Al came to us from the University of Tennessee last year. He entered school as a Junior and helped coach the yearlings. This year he is a Senior and was Assistant Varsity Coach. Al knows football and how to put it across. He is liked by the boys and was a real help in molding a smoothly working combine. He is leaving us this year, and we wish him success wherever he may be.

● Coach Freeman came here as a Freshman Coach this year. He is a former student and athlete of S. T. C. and knows the spirit well. He had plenty of good material this year and handled it to good advantage. Many of his proteges will be good Varsity material next year. He is liked by the boys both on the athletic field and in the shop where he teaches Industrial Arts.

FOOTBALL INDIVIDUALS



CAPTAIN BUCK EDWARDS

Tackle

Buck was captain of the team this year and a good inspiration to the team. He was a good sport and a hard fighter. One might be able to get him down, but not keep him there. This was Buck's last year, and he left school to become a victim of matrimony.

"RED" OWEN

Halfback

"Red," a fast-running back, closed his career as a college athlete this year. He has done many things on the field of battle since he has been at S. T. C. "Red" is a good sport and will be missed next year.

GEORGE SHARPE

Center

George was outstanding in the line this year. He played the pivot position with the skill of an experienced hand. This is George's last year, and we regret to see him leave. He will be missed when November comes.

HOMER PITTARD

Tackle

Homer, the largest man on the squad, gave trouble when anything tried to go over his side of the line. He was never seen down and was always the fifth man in the opposition's backfield. Homer has one more year, and much is expected from him.



FOOTBALL INDIVIDUALS

TODD JACKSON

Guard

Although out of school a year, he came back this year, playing an excellent game of ball. He is a thorn in the opponent's flesh and can always be counted on to smash his portion of the line. He has two more years to play.

ED "SQUAT" HESSEY

Quarterback

In spite of being the smallest man on the squad, he is considered the smartest. He can run a team, use his head, and also use his foot. He is a quick punter and an accurate one. Ed has two more years to do brain work in football.



GRAY SANDS

Fullback

Gray is a Senior and has played four years. In spite of a knee which has slowed him down, he is a hard-driving, line-plowing back. He is also a good defensive man and has been very valuable every year here.

CLOFTON MCGHEE

End

Mac entered school last year after football season. He became eligible for Varsity ball last fall. He was a regular end and played a good game in many ways. He is a good sport, a consistent scrapper, and a hard player. Mas has two more years to play.

FOOTBALL INDIVIDUALS



MYLES BASKIN

Fullback

Myles is a hard-driving, blocking, tackling Sophomore. He has two more years and will accomplish much in this length of time. He is an exceptionally good defensive man and can carry the ball excellently well. Watch him in the seasons to come.

CHARLES "STUMPY" SARVER

Guard

"Stumpy" is a good guard, although he was shifted to backfield last year. This year he returned to his old position and played it well. He has one more year to play and can be counted on to do his part. "Stumpy" is dependable.

EVANS "BURR" SIMMONS

Halfback

"Burr" is a good defensive and blocking back. He can carry a ball when needed, but he is used more for his other qualities. He is little but loud, and the only way a man can be better than him is to be larger. He helps keep the team's spirits up with his cocksureness and bantering. He has one more year. Watch him.

LEE PATE

Quarterback

Lee was out of school last year and lost a lot of his old style, but he came back and played good ball. Before the season was over, he was back to his old style. He can punt, pass, and run, and has one more year to demonstrate his unusual ability.



FOOTBALL INDIVIDUALS

GRANVILLE "WAG" WAGGONER

Guard

"Wag" was converted from a back to a guard which proved to be a good change. He is a blocking, tackling, hard-butting, powerful man, playing a good game both as a guard and back. He is also a Sophomore and has prospects for his two best years yet.

HAMP THOMAS

Fullback

This is Hamp's first year to play here. He came up from another college, making him ineligible last year. He is a hard driver and good tackler, and we are counting on him to fill a place and plug holes on defense.



JAMES CARTER

End

Jimmie also entered last winter and became eligible for the Varsity. He is playing his first year this year. He played end and went back to punt occasionally. He is a good punter and can be counted on in a pinch. He has two more years and prospects of making an outstanding back.

JEAN BATTLE

Center

Jean is from Alabama, and, although a Junior, this is his first year to play here. His name well implies the type of game he plays, for he is a consistent fighter. He has one more year to play, which settles the center question for that duration of time.

BILL OVERBEY

Guard

Bill came here a Junior from Austin Peay. This is his second year. He is a strong cog in the fore wall, being a good sport and a consistent scrapper. This is Bill's last year, and he will be missed.



FOOTBALL INDIVIDUALS



HARTWELL BEASLEY

End

Hart was changed from a tackle to an end. His height and use of his hands helped him greatly. He played a sportsmanlike game, and put forth his best. Hart is a Junior with only one more year.

J. W. JACKSON

Tackle

J. W. is plenty large and a good fighter. He has had a bad knee, but is now in good shape. With two more years, he will develop into a good tackle and prove invaluable to the team.

JOHN HOOVER

Halfback

John is a Junior with one more year of service. He is a fast and very elusive back. With one more year to play he will prove to be a desirable asset. He is a good sport and has plenty of what it takes.

JEFF HARLAN

Halfback

Is he fast? Maybe not, but at least he can carry a ball at a high rate of speed. He is a speedy, elusive back with plenty of "intestinal fortitude" and will to go. He gained plenty of yards this year by sweeping the ends wide. He is another of the group of Sophomores.

JIMMIE NORTON

Manager

Jimmie has plenty of managerial ability and knows how to use it. He can tape an injury and find what is needed from the storeroom. His jovial manner and wisecracks helped the team many times when that was what they needed. As a manager, he was there with the goods.





VARSITY FOOTBALL SQUAD

First Row—Bill Overbey, Gray Sands, George Sharpe, Buck Edwards (captain), and "Red" Owen.

Second Row—"Jeff" Harlan, Raymond Pitts, Hartwell Beasley, Charles Sarver, Hamp Thomas, Lee Pate, and Todd Jackson.

Third Row—Kenneth Ezell (assistant manager), Ed Hessey, Granville Waggoner, Jean Battle, John Hoover, Evans Simmons, Myles Baskin, Clofton McGehee, and Jimmie Norton (manager).

Fourth Row—Freeland Bennett, Homer Pittard, J. W. Jackson, and E. M. Waller (coach).



FRESHMAN FOOTBALL SQUAD

First Row—Roberts, Stewart, McIntyre, Seay, Smith, Hamblen, Summar, R. Simmons, Troop, Tucker, Puckett, Bryant, Hoover, Baskin, and Young.

Second Row—McClard, Pruitt, W. Simmons, Kennon, Dozier, Murphy, Coach Freeman, Hambrick, Sewart, Wiser, and Lester.



FRESHMAN BASKETBALL SQUAD

First Row—Humpy Campbell, Nat Puckett, Shorty Campbell, Cliff Wiser, and Warner Simmons.

Second Row—Coach Nooby Freeman, Bubber Murphy, Jaybird Hamblen, Clarence Norman, Taylor Green, and John Hambrick.

BASKETBALL INDIVIDUALS



JIMMIE NORTON (Captain)

Guard

Jimmie is a Senior, and this is his second year of college ball. The first two years he was barred because of a bad knee. Jimmie is very deceptive and can handle the ball well. He can bring the ball down and is an excellent scorer, a good defensive man and a good sport. Jimmie will be lost for next year because of graduation.

FRELAND BENNITT

Guard

"Ox" is the mainstay of the team. A good guard and one that can take the ball off the backboard. He can also score when he goes under; but usually he keeps the opposition blocked from their goal. "Ox" has two more years, and much is expected of him.

PEYTON "SOUP" ALSUP

Center

"Soup" came here last year from Lipscomb. He has played two years and was an excellent asset to the team. A good center, a good floor man, and a good sport. He will be needed next year, but he also graduates.

EVANS "BURR" SIMMONS

Forward

"Burr" plays basketball just like he plays football. He puts himself into the game and goes hard. He helps keep spirits up and can talk the opposition out of scoring. He works the floor well, both a good defensive and offensive man. "Burr" has one more year and will do his best.



BASKETBALL INDIVIDUALS

KENNETH EZELL

Guard

Kenneth is a Senior and has only played two years; however, he played good ball those two years. Kenneth is a good guard and a scoring threat at all times and positions. He can make baskets from places unknown by many. Kenneth will be lost by graduation.

JAMES "SALLY" HICKS

Forward

"Sally" came here as a Junior and was ineligible his first year. He is a Senior this year. "Sally" plays an aggressive game and is a good scorer. Many games he went in and made his portion—a good sport and a good man to play with, "Sally" will be missed next year.



JOE WALLACE

Forward

This was Joe's fourth year of basketball, but at the first of the season the doctor gave orders not to play. Joe is a smooth floor man and a consistent one. He could be counted on for points and cooperation. It was regretted that Joe could not play the whole season.



LEONARD "LUKEY" MANSFIELD

Forward

"Luke" has an unusual style of deception. He can make baskets that seem incredible. His deception is so good that he sometimes fools himself. A good floor man, a scorer, and a good sport. One more year is all he has, and he will be used plenty.



VARSITY BASKETBALL SQUAD

First Row—Coach E. M. Waller, Joe Wallace, Leonard Mansfield, Kenneth Ezell, James Norton (captain), James Hicks, and Evans Simmons.

Second Row—Hamp Thomas, John Coben, Wilson Summar, Peyton Alsop, Freeland Bennett, Brown Mims, Claude Carroll, and Clofton McGehee.



VARSITY BASEBALL SQUAD

First Row—Red Owen, Jeff Harlan, Jean Battle, Clofton McGehee, Myles Baskin, Gilbert Gordon, and Ed Hessey.

Second Row—Hamp Thomas, Freeland Bennett, J. W. Jackson, Theophilus Basham, Brown Mims, Jimmie Norton, Kenneth Ezell, and Coach E. M. Waller.



Tennis Squad



Cheer Leaders

BOB HITT	MARY ADAMS
POLLY OWEN	RED STEPHENS



WOMAN'S ATHLETIC COUNCIL

Officers

LOVELEEN WETZEL
SARA GEORGE VENABLE
BULEAH DAVIS
MIRIAM ANDERSON
MISS TOMMIE REYNOLDS

President
Vice-President
Secretary
Treasurer
Sponsor

Members

VERNA ELLIS
REBECCA HASKINS

MARY SMITH

CORNELIA GALLIAN
BEATRICE STOREY

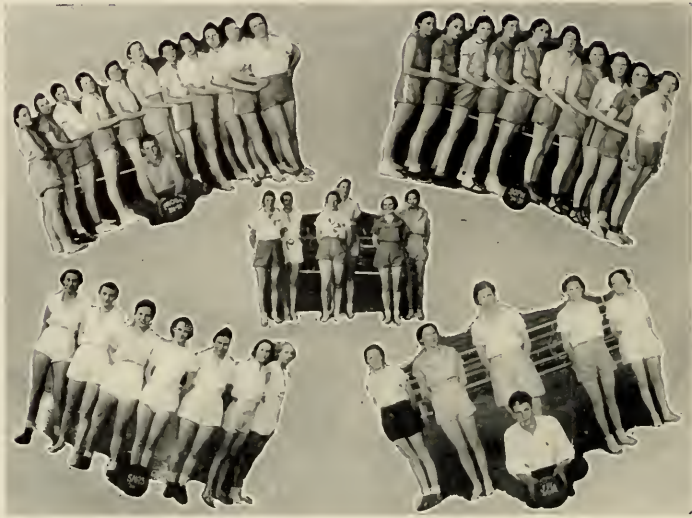


WOMAN'S ATHLETIC ASSOCIATION

Officers

ROSA WHITLEY
MARY JONES
ADELINE BASHAM
MISS TOMMIE REYNOLDS

President
Vice-President
Secretary-Treasurer
Sponsor



Intramural Basketball



Intramural Volleyball



Intramural Baseball Teams



Tennis Squad



VARSITY CLUB

Officers

CHARLES SARVER
 GRAY SANDS
 E. M. WALLER

..... President
 Secretary-Treasurer
 Sponsor

Members

RFD OWEN
 GRAY SANDS
 GEORGE SHARDE
 JOE WALLACE
 JEFF HARLAN
 JOHN HOOVER
 BILL OVRIBLY
 CLOFTON MCGHEE
 HAMP THOMAS
 KENNETH EZELL

JIMMY NORTON
 ED HESSEY
 JIMMY CARTER
 LEE PATE
 TODD JACKSON
 J. W. JACKSON
 LEONARD MANSFIELD
 JEAN BATTLE
 FREELAND BENNETT
 JAMES HICKS

CHARLES SARVER
 HOMER PITTARD
 MYLES BASKIN
 COACH FREEMAN
 BURR SIMMONS
 PEYTON ALSUP
 J. B. EDWARDS
 GRANVILLE WAGGONER
 HARTWILL BASLEY
 COACH WALLER



ORGANIZATION



THE 1935 MIDLANDER STAFF

WILFORD BRANDON
WILLIAM BLAKE CARLTON, JR.
JANE ELLIN MANKIN
KENNETH EZELL
ROBERT M. HITT
JOHNNY HINES
CLAUDE CARROLL
SARA GEORGE VENABLE
MARY WILSON PAYNE

Editor-in-Chief
Business Manager
Assistant Editor
Advertising Manager
Organizations Editor
Feature Editor
Sports Editor
Assistant Sports Editor
Faculty Adviser



TAU OMICRON

Officers

HESTER ROGERS
ELIZABETH SHARDT
MARY BENSON CAMPBELL
JOSPHINE BEACHBOARD
LOVELL WITZEL

Sponsor
President
Secretary
Treasurer

Members

MARY JONES
MARGARET WRIGHT
COLLEEN BENNETT
MARGARET GENTRY

MIRIAM ANDERSON
AVIS MOORE
MARY ELIZABETH WALKER
ELIZABETH TRAVIS

MARTHA POTTS
MARGARET DOUGLAS
ALICE LYLE
MARY WILSON PAYNE



SIGMA CLUB

Officers

SAM HAY
HARRY GOODMAN
CARL ADAMS

President
Vice-President
Secretary-Treasurer

Members

JACK ABLRNATHY
CLAUDE ROBINSON
ROBERT WILSON
ALBERT MIDDLETON
D. F. ADRISSON
HERMAN CARROLL

ROBERT MURPHY
THOMAS GAULT
WATT SMITH
WILSON BROWN
JAMES TAYLOR
IRA DANIEL

LON SHELTON
NEAL D. FRAZIER
W. B. JUDD
MARION EDNEY
T. B. WOODMORE
ROY J. SIMPSON



WRITERS' CLUB

Officers

JANL ELLEN MANKIN
J. B. PLYTON
PHILIP MANKIN

President
Secretary
Sponsor

Members

CHRISTINE STROOP
FLORINCI McCASIN
MARTHA COOPER
ABI MASON
FRANK MCGAVOCK

ROBERT MASON
ELOISI MORTON
RELD HOOPER
MORSE RIDING
ETTA TRAPP
JOHN SIMS

BLAKEMORE OVERALL
FRANCIS SWEENEY
MARTHA GRAY
ELIZABETH McCLAREN
WILFORD BRANDON



MEN'S GLEE CLUB

Officers

JOHNNY HINES
ROBERT M. HITT
ALLIE REAGOR PARKER

..... *President*
..... *Vice-President*
..... *Secretary-Treasurer*

Members

JAMES T. SMITH
JOHN H. ADAMS
BILL YOUNG
ROBERT HARPER

THOMAS HEWGLEY
WILL T. MALONE
BLAKEMORE OVRALL

ROBERT MASON
ABE MASON
RITD HOOPER
SANKY KOEN



DEBATING CLUB

Officers

IRA DANIELS
W. C. SUMMAR
CHARLES D. LEWIS

President
Secretary
Sponsor

Members

JOE NETHERLAND
FRANCES SWIENEY
OLA KIMMER



STUDENT COUNCIL

Officers

MARY JONES	President
MINNIE O. SHASTEEN	Vice-President
REBECCA HASKINS	Secretary
MISS MARGIE MITCHELL	Sponsor
MRS. MARSHALL BURNS	Sponsor

Members

COLLEEN BENNETT	JOHNNIE EDWARDS
ALICE LYLE	LOVELL WETZEL
MARTHA BELL	



Scene from Hunchback of Notre Dame



DRAMATIC CLUB MEMBERS

WILL T. MALONE
BLAKEMORE OVERALL
FLORENCE McCASLIN
CICIL WEBB
ABE MASON
MARTHA MOORE GRACY
MRS. MARSHALL BURNS
JOHN SIMS
MARY JOE MORAN
THOMAS HEWGLY
HATTIE JENKINS
MILDRED STONE
CORINNE CARLTON
JANE ELLEN MANKIN
BULLAH DAVIS

LOUISE GOWER
SARA EMMA MORRIS
HERMAN CARROLL
LUCY GRIFFIN
WILLIAM BLAKE CARLTON, JR.
KATHERINE CODPINGER
ALLIE REAGOR PARKER
OWEN GRIFFIN
PRESTON BRAY
LOUISA WINN
PEGGY GOLDSTEIN
ROBERT M. HITT
JOHNNY HINES
HENRIETTA BOWDEN
WILSON HOOVER
FRANCIS SWEENEY

FRANK JONES
POLLY ANN WORKMAN
MARGARET MAHONEY
CHRISTINE STROOD
ETHELYN FAITH
DULLA SNEED
MARGARET WRIGHT
OCTAVIA ROGERS
ELIZABETH WEAVER
JOHN RUCKER
BOB MURPHY
MORSE REDING
MELVILLE REYNOLDS
GLADYS ERWIN
CHARLES SCHARDT



GIRLS' GLEE CLUB

Officers

MARGARET WRIGHT
ELIZABETH TRAVIS
MARGARET GENTRY
ADELINE BASHAM
E. MAY SAUNDERS

President
Vice-President
Secretary
Treasurer
Director

Members

FROSTY EARTHMAN
ELIZABETH WEAVER
GLADYS SYKES
ADELINE BASHAM
MARY ESTES
MARGARET GENTRY
CORNELIA HARRISON
ELIZABETH TRAVIS
BLANCHI KNIGHT
BETTY BAKER
REBECCA WILKINSON

ELDON CARNAHAN
RACHIL CLARK
OUIDA LOWRY
MARGARET WRIGHT
LUCILLE DRYE
FRANCES ROGERS
LITRESS BRATCHER
ERLINE JENNINGS
JEWEL MITCHELL
MARGARET HITT
MRS. AMY WOODYARD

GENEVA RIGSBY
DILLA SNEED
MARIE DE FRIESE
ROSA WHITLEY
RUBY MORRIS
MARY ELIZABETH WALKER
IRENE WILLIAMS
CLIMINTIA THOMPSON
FLIA MAI MCCUTCHEON
MARGARET SHARPE
CORINNI CARLTON



BAND

Officers

RHODA LEE MOORE	President
AVIS MOORE	Vice-President
WILL T. MALONE	Secretary
DR. W. M. MEBANE	Director

Members

TRUMPETS
 JAMES LOKLY
 BILL WITZEL
 CLYDE FITE
 MADISON DILL
 TOMMIE RYLANDS

TROMBONES
 RUEUS BUCHANAN
 MARY E. BOYD
 LOUISA WINN
 MAMIE COOK

ALTOS
 MARGARET DOUGLAS
 MARGARET WRIGHT

MARGARET GENTRY
 ELIZABETH TRAVIS
 BARITONES
 THOMAS HEWGLEY
 CHRISTINE COOK
 JOHN JOLLY

SAXOPHONE
 JERRY WOMACK
 AVIS MOORE

CLARINETS
 RHODA LEE MOORE
 ALLIE PARKER
 WILL T. MALONE

RACHEL CLARK
 ROBERT MURPHY
 TOM MUSE
 JOHN M. MANLLY

BASSES
 JOHNNY HINES
 WATT SMITH

DRUMS
 CHARLES SCHARDT
 JACK HUGHES
 VAN FOX

CYMBALS
 MARTHA MOORE GRACY



ORCHESTRA

Mrs. AULTMAN SANDERS

Director

FIRST VIOLINS

MARGARIT WRIGHT
ANDRENA CROCKETT
MILVILLE RLYNOLDS
MARY WILSON PAYNE
RUTH PATE
MARIE DE FRIESE
MIKE JONES
JANE MALONE

SECOND VIOLINS

MARY ELIZABETH WALKER
ERLINE JENNINGS
LOUISA WINN
RUTH GILLESPIE
MAYME COOK
E. MAY SAUNDERS

CELLOS

AVIS MOORE
GENE CROCKETT

DRUMS

WILL T. MALONL

VIOLA

MARY ELEANOR BOYD

BASS VIOLIN

TOMMIE REYNOLDS

TRUMPETS

JAMUS LOKLEY
LOVELLEN WITZEL

CLARINETS

ALLIE R. PARKER
RHODA LIL MOORE
JOHN M. MANLEY

ALTO HORNS

MARGARET GENTRY
W. M. MIBANE

TROMBONE

RUFUS BUCHANAN
BASS HORN
THOMAS HEWGLEY

PIANO

CHARLES SCHARDT



HOME ECONOMICS CLUB

Members

THELMA BEASLY
MARY CAMPBELL
DOROTHY CLARK
LAURA LOVELL
KATHERINE CLINARD
MAYME COOK
CHARLOTTE COTTON
ELLEN EARTHMAN
MARTHA GUSHERT
MARY CLIFTON HUNTER
MRS. VASHTI JAKES
RACHEL JONES
BONNIE LANGFORD
MARY JOE MORAN

SALLIE MAE RING
PAULINE ROBERTS
OCTAVIA ROGERS
MARIETTA SAWYER
JANICE SIMS
MAIRA SCOTT
VIRGINIA STARBUCK
MAY LOVE STEGALL
MARIE THOMAS
IDABELLE WADE
NELLE WALKER
IRENE WILLIAMS
OPAL DICKSON
PAULINE MALONE

AVINE KOONS
BERTHA McFERRIN
MAUDE MITCHELL
MARTHA CAPPs
JUANITA BURKS
CLARA MANOR
RUTH GILLESPIE
MISS AGNES LITILE
MISS MAY C. FRANK
MRS. HOMER LAWS
VIRGINIA HITT
LETITIA CLARK
ALLIENE REED
MYRTLE FOUTCH



ASSOCIATION CHILDHOOD EDUCATION

Officers

MARGARET HITT
 MRS. AMY WOODYARD
 KATHERINE COPPINGER
 LULA ROSSON
 SARAH BOONE FULLER
 PAULINE ROBERTS
 MARY FRIZZELL

President
Vice-President
Vice-President
Secretary
Treasurer
Program Chairman
Sponsor

Members

ALLXANDER, RUTH
 BARNES, BILLIE
 BARTON, ELLEN
 BEASLY, THELMA
 BARKER VIVA
 BASS, LAURA
 BINGHAM, NELL
 BOWLING, LAVADA
 BOYLES, DAISY
 BRATCHER, LI TRISS
 BROWN, ELIZABETH
 CAMPBELL, MARY
 COOPER, MARTHA
 COPPINGER, KATHIRINI
 ELDER, NANCY
 FAITH, ETHILYNE
 FRENCH, ELIZA
 FULLER, SARAH BOONE
 GRAHAM, ELIZABETH
 GREEN, MYRA
 GRIFFIN, LUCY
 HASKINS, RUBYCCA
 HELTON, RUBY
 HITT, MARGARIT
 HOOPER, MARY
 HOOVER, ELIZABETH

HOOVER, FANNY
 HOOVER, RUBY
 JAKES, MRS. VASHTI
 JENKINS, HATTIE
 JERNIGAN, ANNIE D.
 JERNIGAN, ANNE
 JONES, RACHEL
 KIMMER, OLA
 KENNIDY, THILMA
 KERR, LUCILLE
 KIRBY, COBY LEE
 LAWRENCI, HENRIETTA
 LAWSON, INA BLANCHIE
 LITTLE, CORNELIA
 LOWELL, LAURA CRAIG
 MANOR, CLARA
 MARTIN LILLIAN
 MCBRIDE, ANNIE RUTH
 MCGAVOCK, MARY MANN
 MCGHEE, LUCILLE
 MCKELVLY, OLITA
 MITCHELL, KATHRYN
 MOORE, NILLIE
 MORTON, ELOISE
 MYATT, MAYMI
 NILL, ELIZABETH

PASCHAL, MRS. MAYNETTE
 RILEY, ODA
 RING, SALLIE MAY
 ROGERS, REBA FRANCIS
 ROBERTS, PAULINE
 ROSSON, LULA
 SHADAP, JEAN
 SHASTIEN, MINNIE O.
 SNELL, AZILEE
 STUBBLIHL, LOTA
 SYKES, GLADYS
 TALLANT, DOROTHY
 TAFT, THIRISA
 THOMPSON, CLIMINTIA
 UMBRAUGH, MARY FRANCIS
 WALKER, MARY LOU
 WELMS, LOIS
 WILLIAMS, ALMA
 WILLIAMS, ANNE
 WILLIAMS, THELMA
 WILSON, PAULINE
 WINNIE, MILDRED
 WINSTEAD, DELVA
 WARREN, VIDELLI
 WOODWARD, SARA ANNE
 WOODYARD, MRS. AMY



STUDENT CHRISTIAN UNION

Y. W. C. A. Officers

BULLAH DAVIS
 LULA ROSSON
 MARY CAMPBELL
 VIRGINIA WILKINSON
 LAURA LOVELL
 FLORENCE McCASLIN
 JANE VAN PELT
 FRANCES JOHNSON
 ETTA TRAPP
 MRS. MARSHALL BURNS

President
Vice-President
Secretary
Treasurer
Reporter
Dramatic Director
Song Leader
Pianist
Critic
Sponsor

Y. M. C. A. Officers

CLOFTON MCGEHEE
 WILSON C. SUMMAR
 JOHN SIMS
 FRED NEWMAN
 B. B. GRACY

President
Vice-President
Secretary-Treasurer
Reporter
Sponsor



WOHELO CLUB

Members

BURR SIMMONS
HUMPY CAMPBELL
NAT PUCKETT
ROY WALTZ
LORNE NEECE
STUMPY SARVER
LUKEY MANFIELD
JOE TROOP

FREELAND BENNETT
MAMMY BASS
RACHEL JONES
AUDREY ROE
WAG WAGGONER
DOT GOODALL
EARL COLEMAN
SARAH LEE FULLER
SOUP AINSUP

DUDLEY SANDS
JOHN HOOVER
BROWN MIMS
NILLE KEITH
EMMA BRAMBLITT
LOUISI POWERS
OLA KEMMER
CLIFTON MCGIHLE



RURAL LIFE CLUB

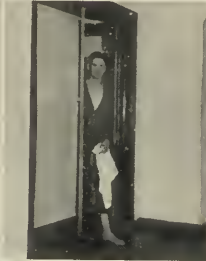
Officers

	<i>Fall</i>	<i>Winter</i>	<i>Spring</i>
President	PEYTON ALSUP	SARAH GEORGE VENABLE	HOYTE OWEN
First Vice-President	CLOFTON McGEHEE	HARRY GOODMAN	CRANVILLE WAGGONER
Second Vice-President	SARAH GEORGE VENABLE	SAM FLURY	AUDREY ROE
Secretary	BULEAH DAVIS	RUTH ALEXANDER	RUTH ALEXANDER
Treasurer	MARY JONES	MARY JONES	MARY JONES
Sponsors	B. B. GRACY	K. T. HUTCHINSON	

Members

ABERNATHY, JACK	ELLIS, VERNA	LOWE, PEARL	SANDS, GRAY
ALEXANDER, RUTH	FULLER, SARAH BOONE	LYLE, ALICE	SARVER, CHARLES
ALSUP, PEYTON	GALLIAN, CORNELIA	MALONE, WILL T.	SAWYER, MARIETTA
AYRES, ANNIE RUTH	GOODMAN, HARRY	MANSFIELD, LEONARD	SCOTT, OWEN
BAGWELL, ANNE	GRACY, MARTHA MOORE	MATTHEWS, JANIE	SHARPE, GEORGE
BASKIN, MYLES	GRAHAM, ELIZABETH	McGEHEE, CLOFTON	SHASTEEN, MINNIE O.
BASS, ALWILDA	GREFR, EDD	McGEHEE, LUCILE	SMITH, MARY
BASS, ROBERT	HASKINS, REBECCA	NEWMAN, FRED	SORY, ELIZABETH
BENNETT, FREELAND	HESSEY, ED	NEWMAN, SHAD	STAMMER, JAMES
BINKLEY, GEORGE	HEWGLLY, TOM	NICHOLSON, FRANCES	SUMMAR, WILSON
BRAMBLETT, EMMA	HICKS, JAMES	NORTON, JAMES	THOMAS, ERNEST
BRANDON, RUFUS	HITT, ROBERT M.	OVERBEY, BILL	THOMPSON, CLEMENTIA
BRANDON, WILFORD	HOOPER, REED	OWEN, HOYTE	TRAPP, ETNA
CARROLL, CLAUDE, JR.	HOOPER, JOHN	POWERS, LOUISE	TROOP, JOE
CARROLL, THOMAS	HOOPER, WILLIAM	PITTARD, HOMER	TUCKER, TOMMIE
CARLTON, BILL	HOOPER, WILSON	PITTS, RAYMOND	VENABLE, SARAH GEORGE
COLLINS, BILL	JACKSON, J. W.	REEVES, SARA	WHEELER, CHARLES
CROCKETT, SHELLEY	JONES, MARY	RION, SARA	WINN, LOUISA
CUMMINGS, HAROLD	JONES, MIKE	ROE, AUDREY	WORKMAN, PAULINE
DAVIS, BULEAH	KENNON, EMMLTT	RUCKER, ELLIS	WRIGHT, MITCHELL
DRAPER, HOUSTON	LESTER, HARRY	RUCKER, JOHN	YOUNG, BILL

MEET THE JONES BOYS



CAUGHT AGAIN



FINESSING YOUR QUEEN



MACHINE IN ACTION



YOUNG AND HEALTHY



MEET THE FAMILY



SEEKING THE TRUTH



FEATURES



FRANCES NICHOLSON
Queen of Love and Beauty



REBECCA HASKINS
Most Popular Girl



VERNA MAI ELLIS

Most Versatile Girl



WILLIAM BLAKE CARLTON, JR.
President of Student Body



SAM HAY

Best All-Round Student



ROBERT M. HITT
Prince of Personality



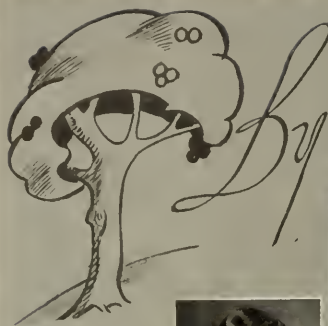
GRAY DUDLEY SANDS
Bachelor of Ugliness



JAMES A. NORTON
Most Versatile Boy



GEORGE SHARPE
Master of Salesmanship



By their Fruits



COMUS



MORPHEUS



MINERVA



SIBEN



ATLAS



AEOLUS



MOMUS



APOLLO



ANCHISES



EROS



NARCISSUS



ARACHNE

F E A T U R E T T E S

Here and There



Autographs



Ads



STATE TEACHERS COLLEGE

MURFREESBORO - - TENNESSEE

•
OFFERS A


Four Year Course Leading to
Degree of Bachelor of Science

•
A MEMBER OF

Southern Association of Colleges and Secondary
Schools

The American Association of Teachers Colleges
The Southern Interscholastic Athletic Association
The Tennessee College Association

•
For Catalog Address
P. A. LYON, President



•

We Invite Your
Patronage

MURFREESBORO
BANK AND TRUST
COMPANY

Affiliated with
The American National Bank
NASHVILLE

•

CITY TAXI CO.
Courteous Service Day or Night

Operated by
JNO. D. REEVES and NEIL FITE

PHONE 144

The College Girls'
Shop

STYLE SHOP

PHONE 77

A. L. SMITH & CO.
DRUGGISTS

Candy — Magazines — School
Supplies

Phone us your order

Compliments of

RAGLAND-POTTER
COMPANY

Use that

GOOD GULF GASOLINE

Trade at Gulf Service Stations

R. Y. MARTIN, Distributor

Compliments of

PIGGLY-WIGGLY

SOUTHEASTERN GREYHOUND LINES

LOW RATES — FREQUENT SERVICE

Terminal Phone 727

HOMER MAHOLLAND, Manager

EARTHMAN-WILSON MOTOR CO.



SALES

SERVICE

W. B. HORTON ROY P. NORRIS

HORTON GROCERY
COMPANY

Wholesale and Retail

STAPLE
AND FANCY GROCERIES
FEED AND SEED

PHONES 88, 89

MURFREESBORO
LAUNDRY CO.

LAUNDERERS
DYERS
CLEANERS

See Our S. T. C. Agent

STICKNEY & GRIFFIS

Everything you would expect to find in

A MODERN DRUG STORE

(West side Square)

C. R. BYRN MOTOR CO.

CHRYSLER-PLYMOUTH

Phone 33

MURFREESBORO

BELL BROS. & COMPANY, INCORPORATED

LUMBER AND BUILDERS SUPPLIES
PAINT, WALL PAPER AND GLASS

Tel. 196

Tel. 196

MURFREESBORO, TENNESSEE

NEWS WHILE IT'S NEWS

Complete Sports Coverage of S. T. C.

DAILY NEWS-JOURNAL

Why take a chance when you can
buy

MAGNOLIA BUTTER

Cannot be excelled in quality.
Costs no more than ordinary
butter

RUTHERFORD
COUNTY CREAMERY
ASSOCIATION

Phone 14 for

EGGS AND POULTRY


J. T. CARLTON & CO.

W. Main St.

H. G. HILL CO.

"It's a fact, you always do better at
Hill's"

FIT FOR A KING COFFEE
GRANDMA'S WONDER FLOUR



SINCLAIR

There is a Sinclair Service Station in your neighborhood. Patronize it
and be assured of getting Sinclair Motor Oil in sealed cans.

SINCLAIR REFINING COMPANY

S. F. HOUSTON, Agent

TELEPHONE 444

**MURFREESBORO BREAD
& ICE CREAM CO.**

Try Our Delicious

"SALLY ANN" ICE CREAM

Sold at Leading Drug Stores

"Dunk"

"SALLY ANN" DOUGHNUTS

with your friends at the cafeterias

"SALLY ANN" BREAD

Rolls and Cakes

AT ALL THE GROCERIES

CLARK DAIRY PRODUCTS COMPANY

Incorporated

MANUFACTURERS OF

DAWN BUTTER and CREAM CHEESE

Try . . .

WOCO PEP MOTOR FUEL
AND TIOLENE MOTOR OILS

And Check the Performance of Your Car
PURE OIL COMPANY OF TENNESSEE

H. P. AND F. E. ALLEN, Agents

Compliments of

The
Rosary

COOK'S
SERVICE STATION

PHONE 110

CANNON'S QUALITY
MARKETS

"Where-U-Save"

Phone 1053

GROCERIES AND FRESH MEATS

McCORD & HARRIS

THE REXALL STORE

Phone 187

SCHOOL SUPPLIES
SPORTING GOODS
DRUGS AND SUNDRIES

Here's My Check—Gladly

I am satisfied it represents value Received and I know my firm can offer you equally great satisfaction. When you are in need of petroleum products please be kind enough to remember the . . .

PAN AMERICAN PETROLEUM
CORPORATION

T. J. DEMENT, Agt. — Phone 75

Compliments of

COMMERCE UNION BANK

MURFREESBORO, TENN.

Built on Confidence
GROWING THROUGH SERVICE

ELECTRIC SHOE SHOP

We Appreciate Your Patronage

S. T. C. Students Welcome

Southeast Corner of Square

SHEARIN BROS.

**C. B. LEATHERMAN AND
COMPANY**

**DRY GOODS AND LADIES'
READY-TO-WEAR**

We Appreciate S. T. C. Patronage

PHONE 69

**JAMES K. POLK
BEAUTY SHOPPE**

Quality Service by
Experienced Operators

Phone 493

MRS. OLA HAYES SMITH
MRS. BEN REEVES

**BOB'S
GROCERY**

**BOULEVARD
STORE**

Groceries and Meats
Gas and Oil

Ice Cream and Drinks

PHONE 476

Goldstein's
GOOD CLOTHES

S. T. C. Headquarters

CONSUMERS SUPPLY COMPANY

ICE AND CONSUMERS ICE CREAM

"A Home Concern for Home People"

Cecil Elrod's
FRENCH SHOPPE
INCORPORATED

MURFREESBORO, TENN.

Shope Individual

READY-TO-WEAR ACCESSORIES
MILLINERY

PHONE 382

COMPLIMENTS OF

Colonial Coffee and Colonial Foods

Distributed by

C. B. RAGLAND CO.

NASHVILLE, TENNESSEE

Everything for Kitchen, Dining Room
and Nursery

PHILLIPS & BUTTORFF MANUFACTURING CO.

NASHVILLE, TENNESSEE

C. B. ARNETT'S MEAT
MARKET

Fresh and Cured Meats

Phone 185

KERR & MARTIN
Drug Store

We Frame Pictures at
Little Cost

East Side Square

Telephone 45

WOODFIN & MOORE

Phone 90

AMBULANCE

ANY WHERE
NY TIME
NY PLACE

BROWNS'

BROWN BILT SHOE STORE

"Specialist in Smart
Foot Covering"

COLLEGE INN

Where Friends Meet
Curb Service

PLATE LUNCHES
TOASTED SANDWICHES

Just Off the Campus

PHONE 340

TIP TOP
BARBER SHOP

"S. T. C., We're
Behind You"

JACOBS PACKING
COMPANY

Packers of

FOOD PRODUCTS THAT
SATISFY

NASHVILLE, TENN.

McKAY-CAMERON
COMPANY

Nashville, Tennessee

GLASS—CHINA—SILVER

Cooking Utensils for Hotels,
Restaurants, Colleges

J. C. PENNEY COMPANY

OLD FASHIONED

in our insistence of honest values

BUT MODERN

in style and service

BUCHANAN & TARPLEY
DRUGS

TENNIS SUPPLIES — SODA WATER

Phone 7

We Deliver Your Order

F. W. WOOLWORTH
COMPANY

Complete Line of
SCHOOL SUPPLIES

TRAVIS & GREGORY

Harness — Hardware

SHOE REPAIRING

212 W. Main Street

Compliments of

LAMB COFFEE CO.

MAGNOLIA COFFEE

PHONE

37

Firestone
SERVICE STORES

MURFREESBORO, TENN.

303

W. College St.

SCHOOL
and
COLLEGE
ANNUAL
PUBLISHERS
PERSONAL SERVICE
AND
CO-OPERATION

The Modern Printers

McQUIDDY

PRINTING & COMPANY

PRINTERS & PUBLISHERS

NASHVILLE ~ TENNESSEE



3 3082 00529 0340

CALL NUMBER

T
378.768
M58m
1935

90-04708

Middle Tennessee State University

AUTHOR

Midlander

TITLE

LIBRARY

MIDDLE TENNESSEE STATE UNIVERSITY
MURFREESBORO, TENNESSEE

